

FIRST FLOOR PLAN

LIVING LEVEL NOTES:
 HEAT PUMP 200 AMP SERVICE
INSULATION:
 ATTIC R-30
 EXT. WALL R-13
 BASEMENT CEILING R-19
 ATTIC VENTILATION WITH RIDGE VENTS AND PERFORATED SOFFIT VENT
STAIRS
 TREADS 10 1/2"
 RISER 7 1/2"
 WIDTH 36"
 MAINTAIN HEAD CLEARANCE OF 6'-9"

HOUSE HEIGHT:
 BASEMENT:
 FIRST FLOOR:
 SECOND FLOOR:



ARGABRIGHT CONTRACTORS, INC.
 540-890-2970

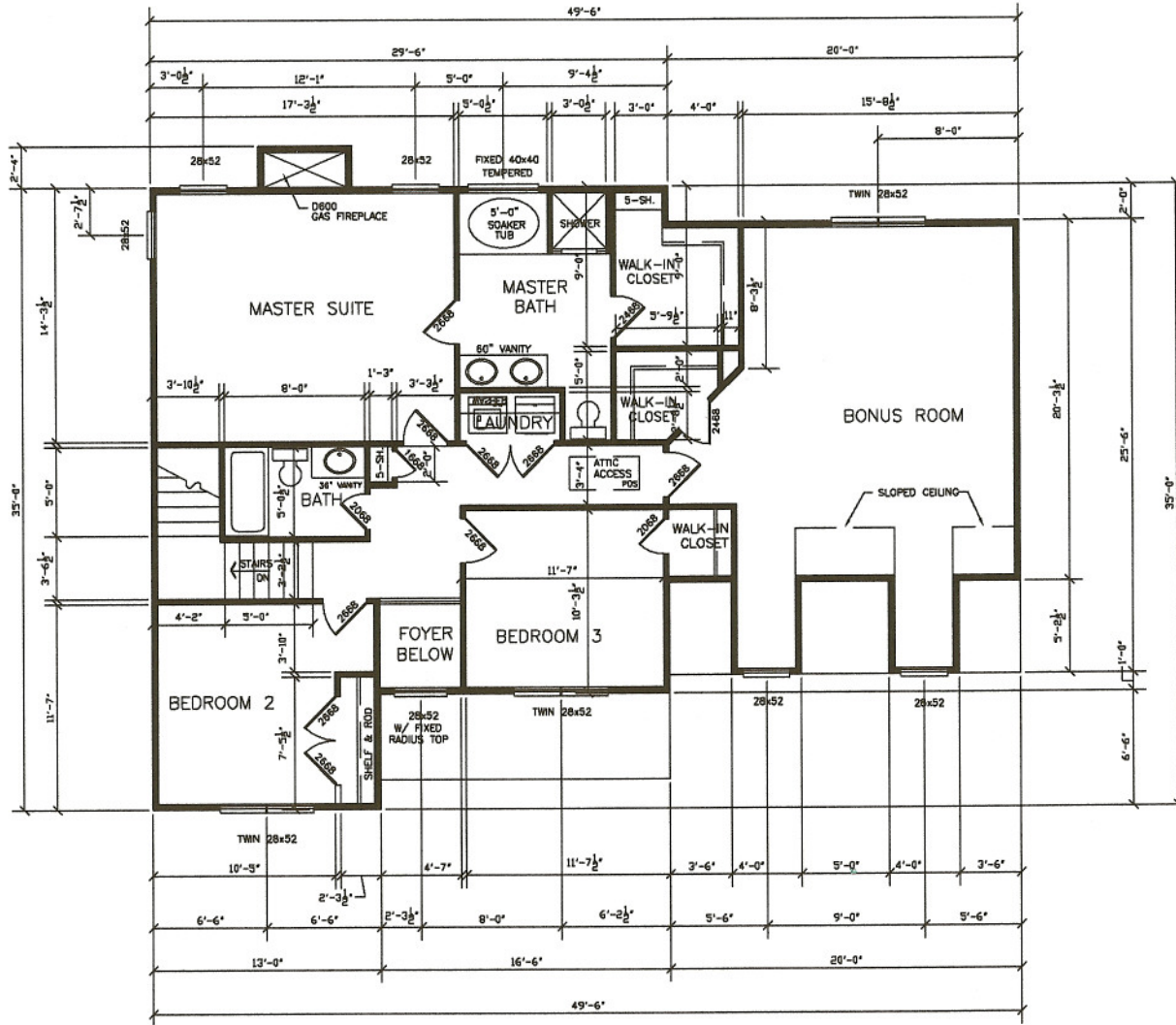


VIRGINIA RIDGE
 www.virginiaridge.com

DESIGNED BY
 FRANK BETZ ASSOCIATES, INC.
 1800 LAKE PARK DRIVE/SUITE 101
 SMYRNA, GEORGIA 30080
 404/431-0888

THE JESSAMINE PARK
 Lot 19

DATE:
 03/01/05
 SHEET:
 A-1



SECOND ROOM FLOOR PLAN

LIVING LEVEL NOTES:

HEAT PUMP 200 AMP SERVICE

INSULATION:

ATTIC R-30

EXT. WALL R-13

BASEMENT CEILING R-19

ATTIC VENTILATION WITH RIDGE VENTS AND PERFORATED SOFFIT VENT

STAIRS

TREADS 10 1/2"

RISER 7 1/2"

WIDTH 36"

MAINTAIN HEAD CLEARANCE OF 6'-9"

HOUSE HEIGHT:

BASEMENT:

FIRST FLOOR:

SECOND FLOOR:



DESIGNED BY
FRANK BETZ ASSOCIATES, INC.
1800 LAKE PARK DRIVE, SUITE 101
SMYRNA, GEORGIA 30080
404/431-0888

THE JESSAMINE PARK
Lot 19

DATE:
03/01/05

SHEET:
A-3

